



MONTHLY MEMBERSHIP PROGRESS REPORT

District 3233G1

Results as of: 05/31/2018

GMT: ANIL TULSYAN

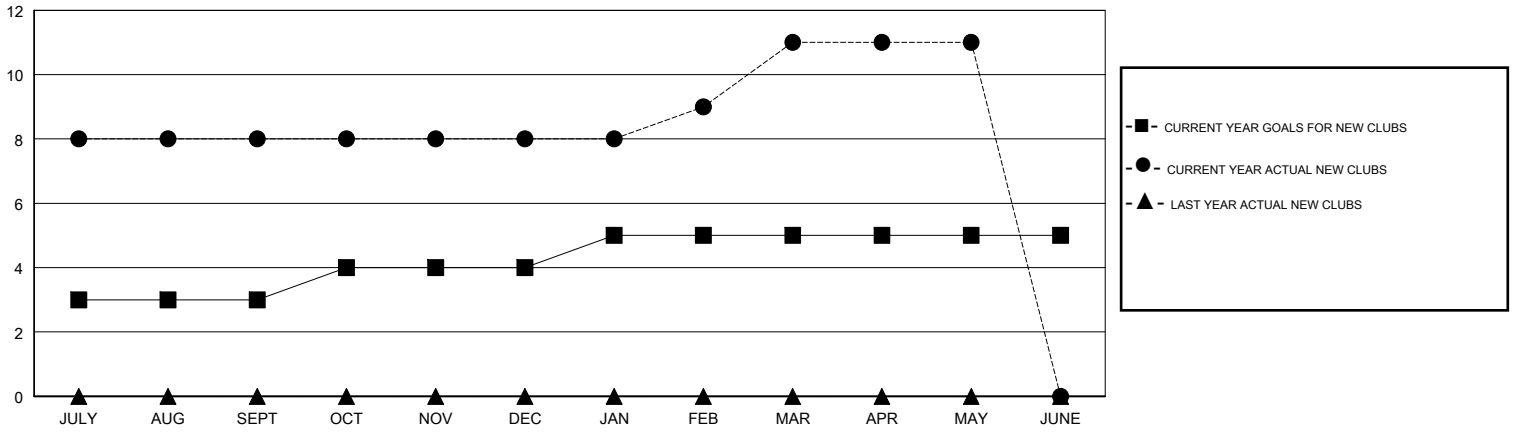
LOCATION INDIA

GMT CA

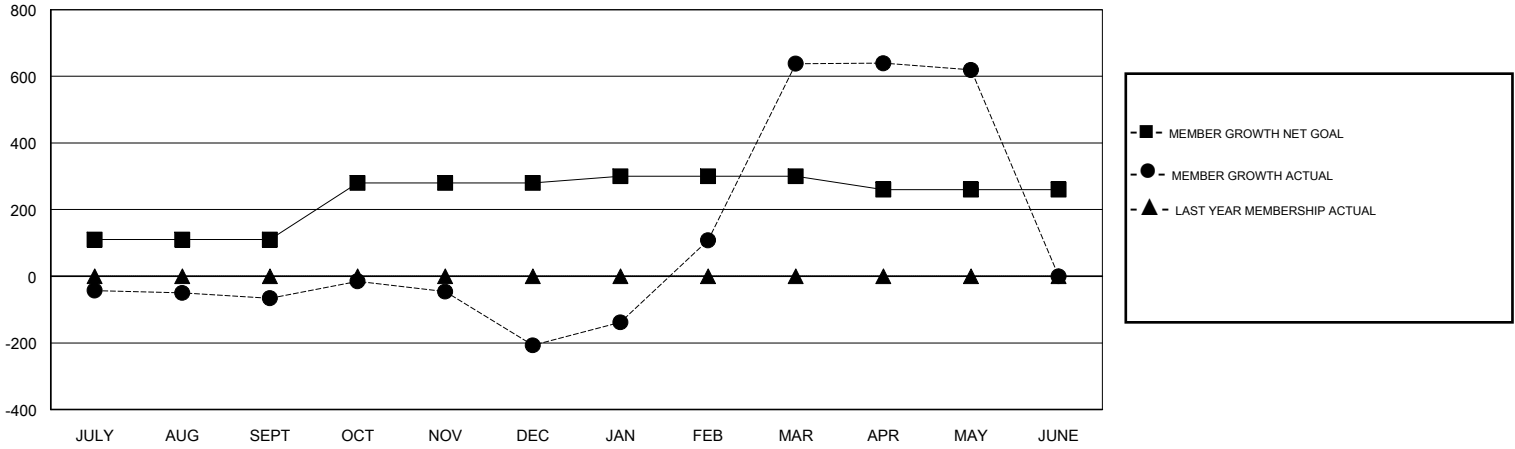
Clubs			
RESULTS FOR 2017-2018			
QUARTER	NEW CLUB GOAL	NEW CLUBS	DROPPED CLUBS
JULY/AUG/SEPT	3	8	0
OCT/NOV/DEC	1	0	5
JAN/FEB/MAR	1	3	1
APR/MAY/JUNE	0	0	0

Members			
RESULTS FOR 2017-2018			
QUARTER	MEMBER GROWTH NET GOAL	MEMBER GROWTH ACTUAL	DROPPED MEMBERS ACTUAL (including transfers)
JULY/AUG/SEPT	110	219	264
OCT/NOV/DEC	170	73	209
JAN/FEB/MAR	20	950	78
APR/MAY/JUNE	-40	38	52

GOALS AND ACTUAL NEW CLUBS CUMULATIVE



GOALS AND ACTUAL MEMBERS CUMULATIVE



DROPPED CLUBS: 6	49 CLUBS OF 130 ADDED 1 OR MORE NEW MEMBERS	<u>GENDER DISTRIBUTION</u>		
		MALE	2,925 (60.63%)	
<u>DROPPED MEMBERS</u>		FEMALE	1,899 (39.37%)	
		Women Percentage Fiscal Year Goal: 30%		
DECEASED	6	TOTAL FAMILY UNIT MEMBERS		2,158
CLUB CANCELLED	78	FAMILY MEMBERS PAYING HALF DUES		1,288
OTHER	519			
TOTAL	603			

[CLICK HERE FOR CUMULATIVE MEMBERSHIP DATA](#)